



RIVERSIDE

APARTMENT FOR SALE

Welcome to "Riverside," a beautiful residential project located in one of Pafos' most sought after areas, Universal.

From

270.000

+ VAT



www.viotopo.com

CALL FOR INFO



Phone
+357 9638 0237

 **viótopo**
the real estate marketplace

RIVERSIDE



PAFOS

Set apart from the lower town and main tourist area, this historic old quarter offers a more laid-back vibe as well as several cultural attractions. Although it is just 2 miles (3 kilometers) from the main seafront tourist area, Paphos City Center or Ktima as it is known locally, feels a world away. Take a stroll around this charming and laid-back part of town to see elegant, colonial-era constructions and the modern commercial center of town. Ktima is the perfect antidote for people looking to escape the busier, livelier and more tourist-heavy district of Kato Paphos or Lower Paphos. Wander around the city center bars and traditional restaurants. Pause for a coffee in a café with a harbor view. While you're here, browse the edible goods on offer at the municipal market. The "agora" as the locals call it is where Paphos residents go to shop for groceries. With its many narrow lanes and its relatively small size, Paphos City Center is best explored on foot. If you don't want to walk uphill to get here, ride a local bus from the harbor instead.



RIVERSIDE

Welcome to "Riverside," a beautiful residential project located in one of Pafos' most sought after areas, Universal.

The project consists of two buildings and 31 apartments, with a large communal swimming pool, landscaped gardens, lobby facilities and an outdoor snack bar.

Designed to blend-in with its natural environment, surrounded by tall trees that offer privacy and tranquillity, the project is a real oasis just a 10-minute walk from the sea.

"Riverside" is located only a few minutes' drive from Pafos Town Centre and within walking distance from Iasis Private Hospital, Neapolis University and the sea.

With developments in Universal enjoying higher rental yields and capital appreciation in the last years, "Riverside" is a great opportunity for both independent buyers and investors.











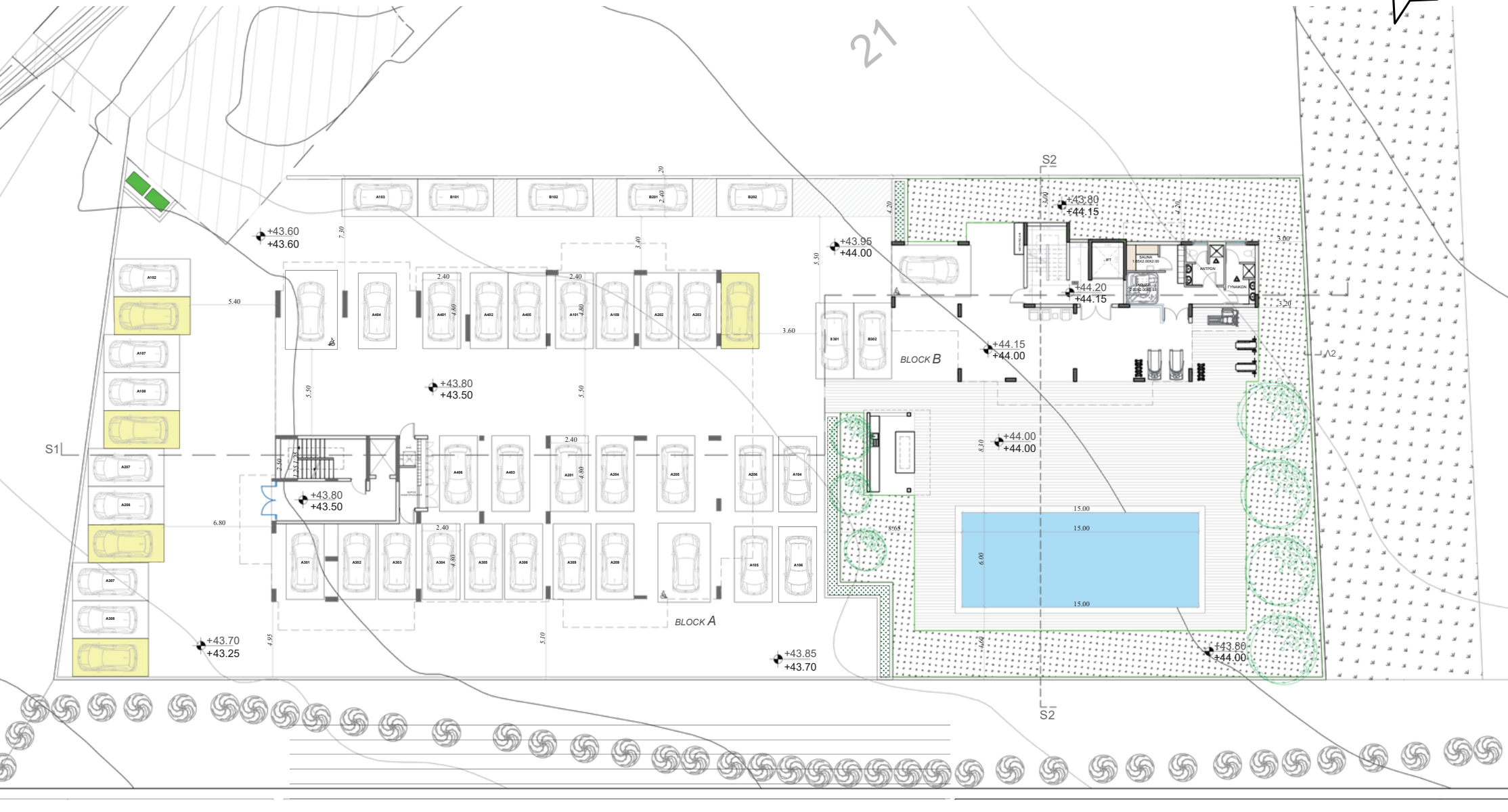






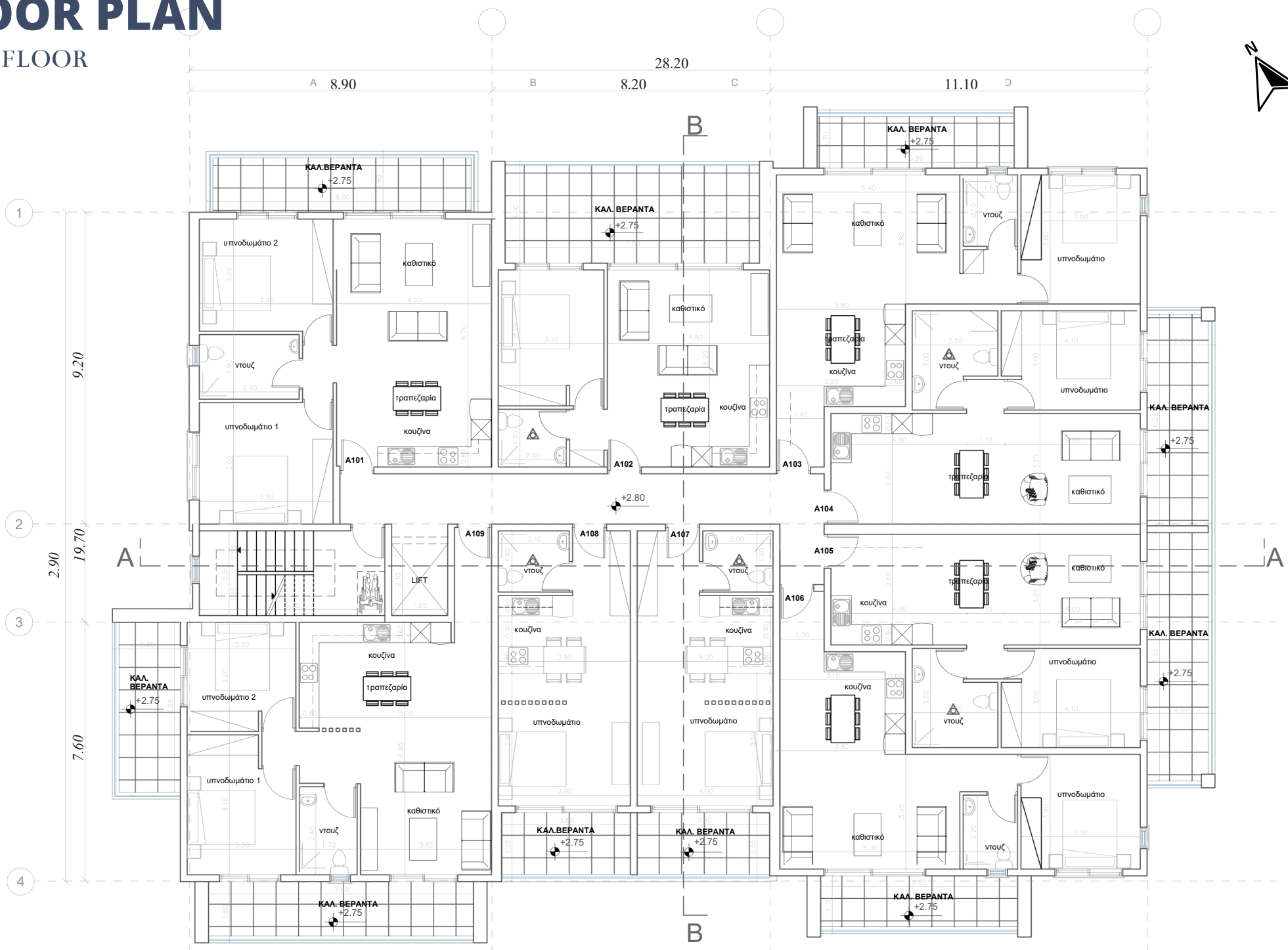
MASTER PLAN

15% ΠΡΟΣΒΟΛΟ



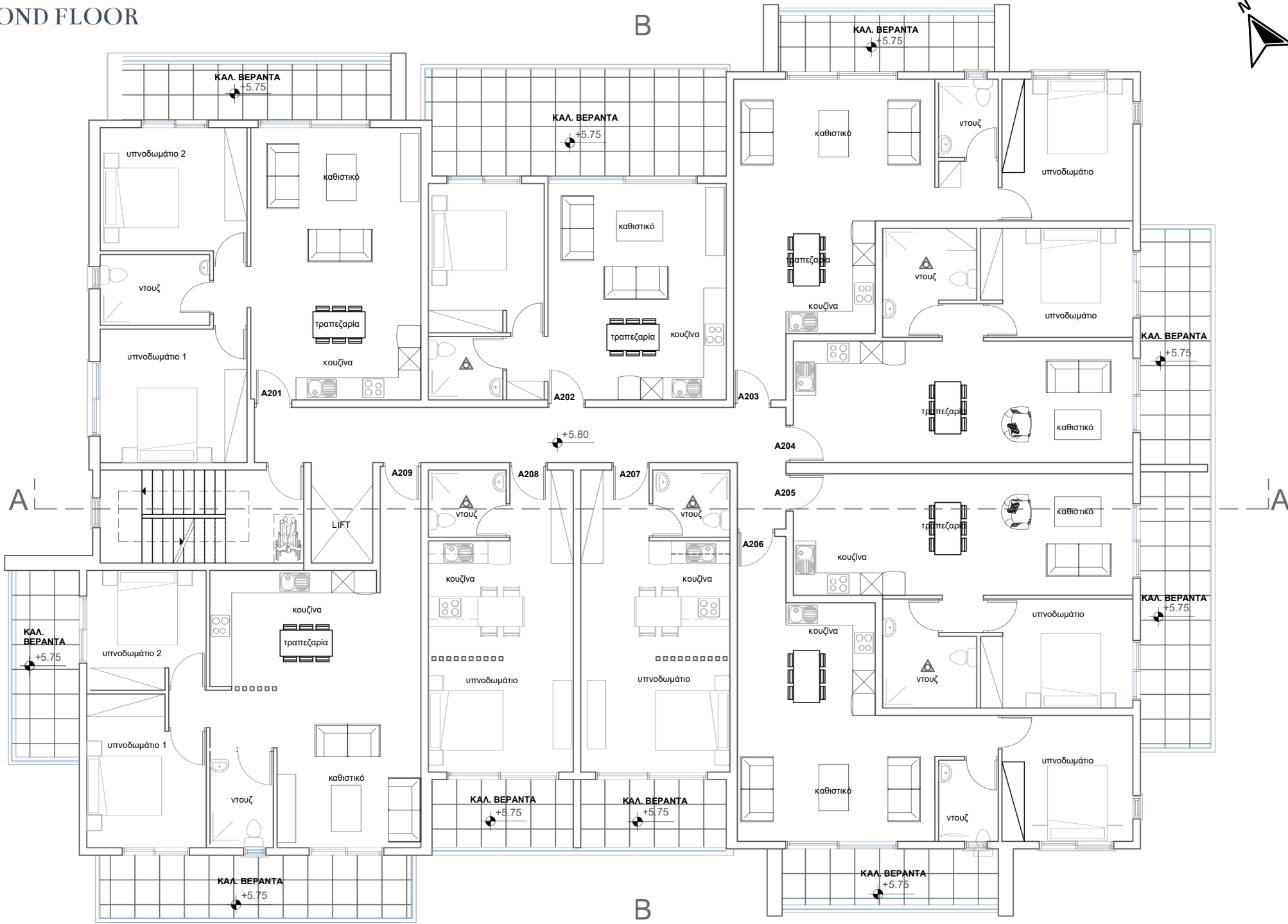
FLOOR PLAN

FIRST FLOOR



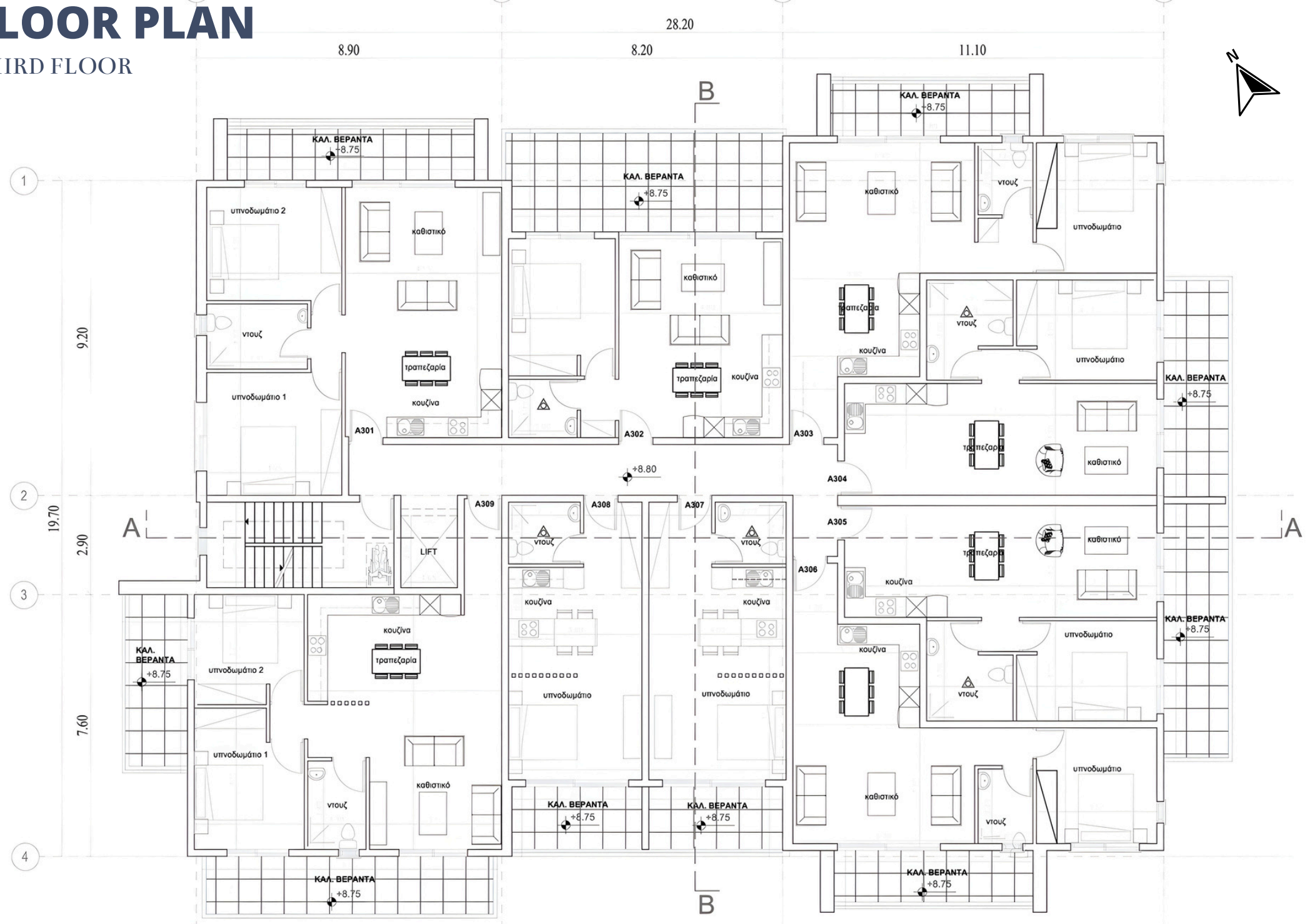
FLOOR PLAN

SECOND FLOOR



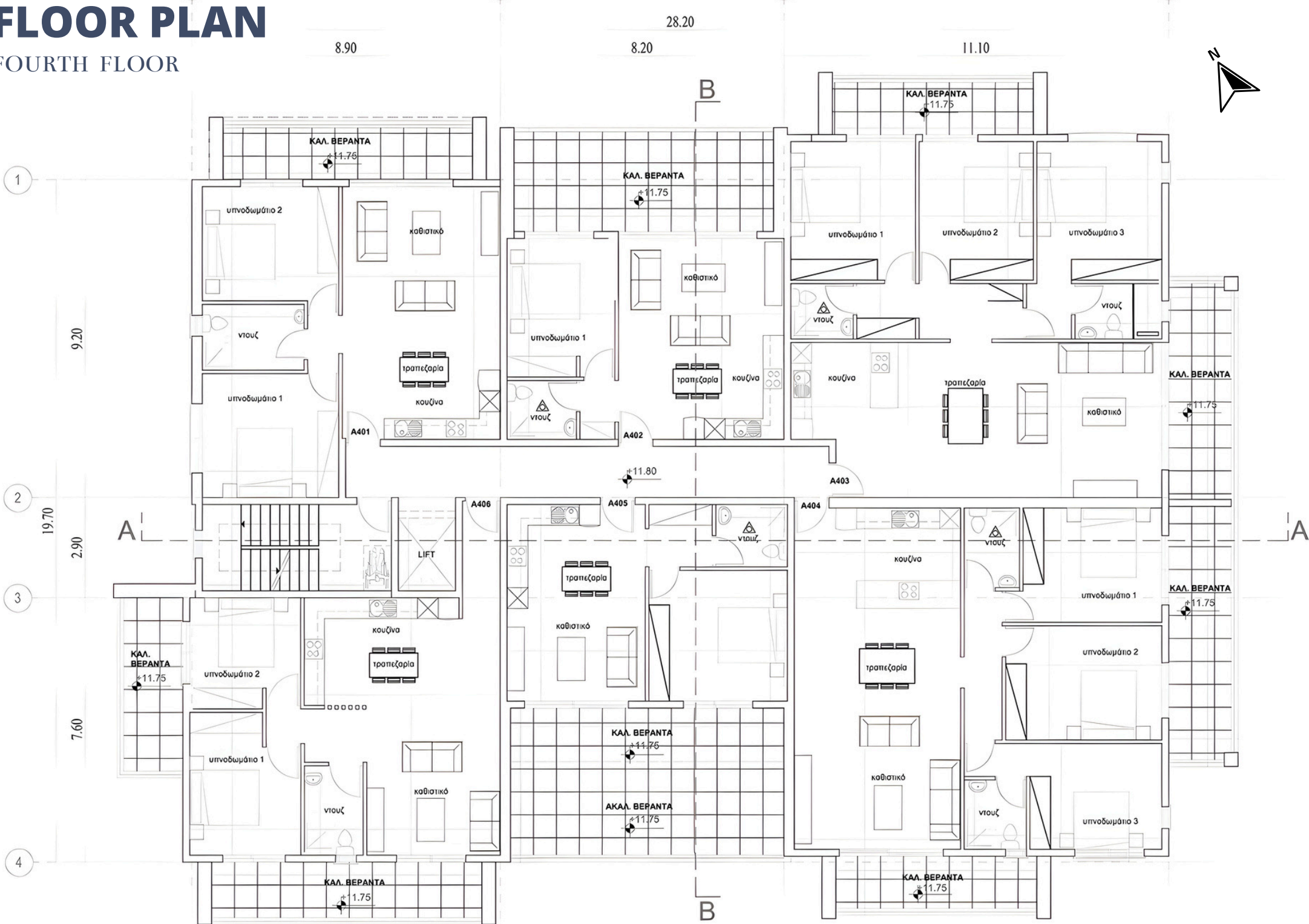
FLOOR PLAN

THIRD FLOOR

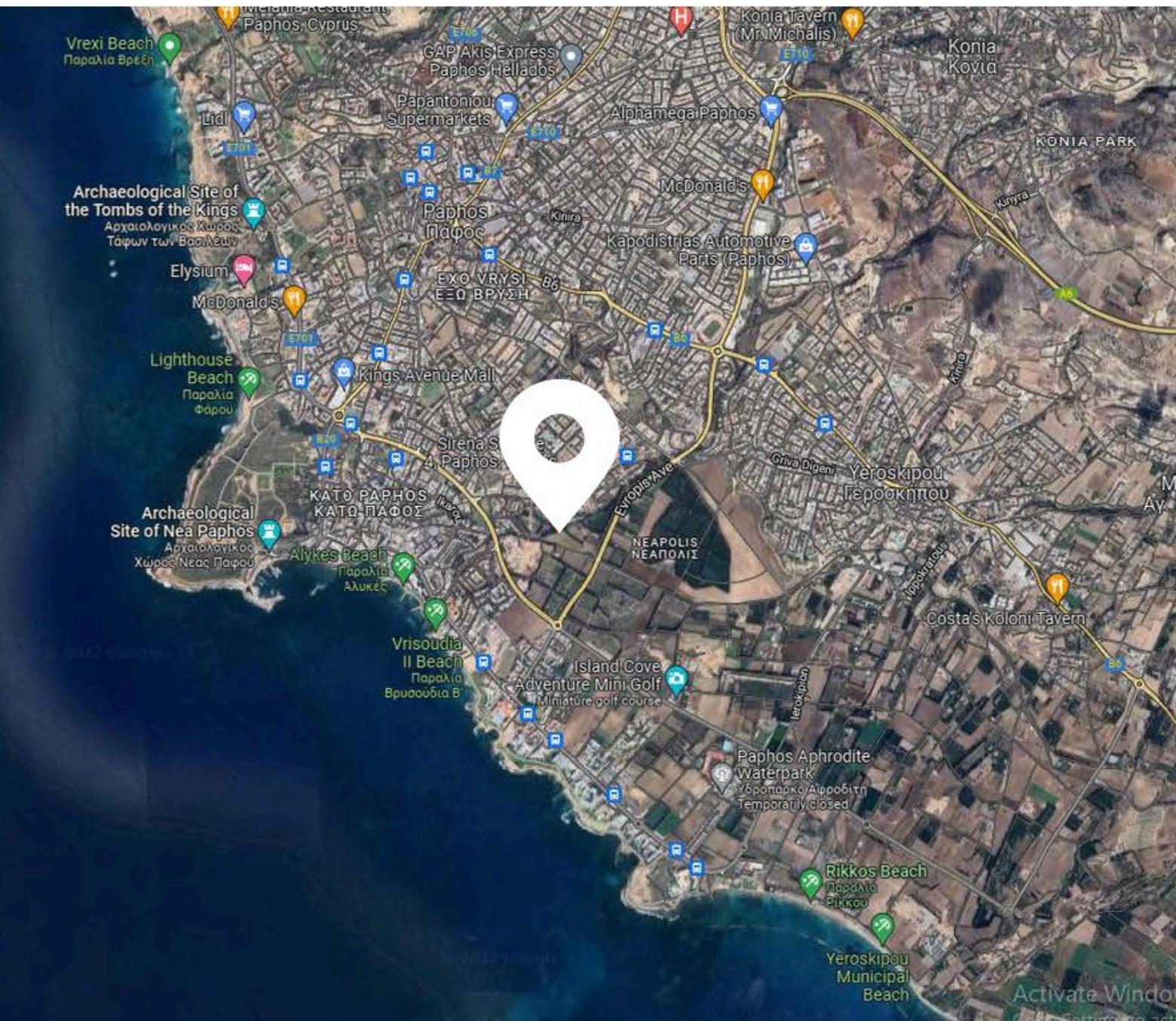


FLOOR PLAN

FOURTH FLOOR



LOCATION



CITY CENTER
1.5KM



BEACH 1KM



AIRPORT
10KM



RESTAURANT
400M



SUPERMARKET
500M



SCHOOL
1,5KM



GOLF COURSE
8KM